



**Champagne
Truffles
Driftwood fire
Your Special Tunes
Red Roses**

The Hesperus Bed

**Birthdays
Anniversaries
Your Wedding Night
Engagements
Love & Romance**



The Hesperus Wet Room/ Shower



Aphrodite Bedroom

**Spa Bath
Luxury Bathrobes
Bath oils**

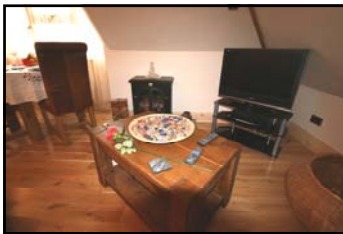


Aphrodite Spa Bath

**Scented Candles
Music
Luxury**



*Morpheus Cavern Bathroom
and Luxury Lounge*



Guests Comments

"Thank you! This is the most Romantic and special place we have ever been. We thought our wedding day couldn't get any more perfect...but thanks to you we enjoyed a whole new, magical element."

"It's amazing what happens when you leave everyday life behind. A wonderful memory".

"...It has made us look at our relationship and remember why we are getting married. ..."

"Wonderful! One of the nicest places we have stayed in during our 26 years of marriage".

A big thanks you to Kathy, for being there for us, at a very special time in our life and relationship. We will never forget this very special place. Thank you.....

"If only words could describe..... "Serenity"
A perfect relationship and a perfect setting totalled a long weekend of Romance....."

"...and the judges scores are in
..... 10.... 10.... 10.... 10.... Perfect!"

**Coming soon!
One4two International
plans to open a luxury suite on the Greek isle of
Rhodes near the village of Lindos 2009 -2010.
Watch this space!**



www.one4two.co.uk

**"Designed purely
For Romance"**

**One4two Bude
offers
3 different ways to**

**Celebrate your
Anniversary, Birthday,
Engagement, Wedding Night
Or Romantic Short Break**

**A combination of Self-catering with
a 5 Star Hotel Suite**

**Every occasion is personally
arranged by the owner.**

Contact Kathy on 07852245967

**"One4two"
The Atlantic Highway.
Stratton, Bude
EX23 9AB**

THE "HESPERUS" SUITE

The "Evening Star"



"ONE4TWO PETITE"

For your "Special Night".

You let yourselves in with your own special entry code to find your special tune playing, a bottle of Cornish Brut on ice, a bouquet of roses, rose petals and Cornish truffles awaiting you in the luxury leather upholstered Bedroom with its matching leather lights romantically dimmed.

TV, DVD, CD, I-pod with full surround sound.

.....

For that sensual time together a full body shower in our large two person wet room awaits.

.....

For the morning you will find your pre ordered breakfast in the fridge/freezer in your Kitchenette / Diner.

3 ft Round table and leather chairs
Professional Cooker, microwave etc

.....

Level access and wide doorways.

.....

This suite does not have a separate lounge

THE "APHRODITE" SUITE

"The Greek Goddess of Love"



**Our Original "5 Star" Luxury Suite
Designed specifically for
"Your Romantic Celebration."**

You let yourselves in with your own special entry code and ascend the stairs. You hear your 'special tune' playing. The design-winning drift wood fire gives a welcoming glow and the hand made Venetian lights are romantically dimmed. A single red rose is laid on the bed. Cornish truffles, soaps, massage/ bath oils and candles await your pleasure. It is your time together.

Furnishings are unique and exclusive designs. Flat screen televisions adorn the lounge and bedroom and music is available throughout the property. There are even ceiling speakers in the bathroom so the dream of soaking in a spa bath, with scented candles burning and your special music playing is a reality. From the lounge, One4two enjoys panoramic views across Bude and the coastline, and on a summer's evening it would be lovely to watch the sun set into the sea. The roof window above the dining table may even give a view of the moon and stars for a romantic meal together.

For the morning your chosen breakfast can be found in the fully fitted luxury Kitchen.

THE "MORPHEUS" SUITE

"The Greek God of Dreams"



A "Total Sensual Experience"

You let yourselves in with your own special entry code. To your left is the Morpheus bedroom. A single red rose lies on the Morpheus bed. This bed is not for the faint hearted being 3 ft off the floor. In front of you the spiral staircase takes you up to the lounge / diner, with views over Bude Bay.

The Cavern Bathroom

As you open the door you feel drawn into this rock cavern with its 6ft diameter circular bath. The coloured lights slowly changing cast shadows over the rock and slate walls / ceiling. A sky light gives you the option to bathe together under the stars, or why not by candle light?

A rain drop shower is also available for an alternative experience.

For the morning your chosen breakfast can be found in the Kitchenette with a professional cooker fridge freezer dishwasher microwave.

In the lounge/diner you find our leather "Snugla" sofa and chair.

A 3 ft round table 2 leather chairs;
A separate toilet.

Both the bedroom and the main lounge offer full surround sound TV.DVD, CD, I-pod